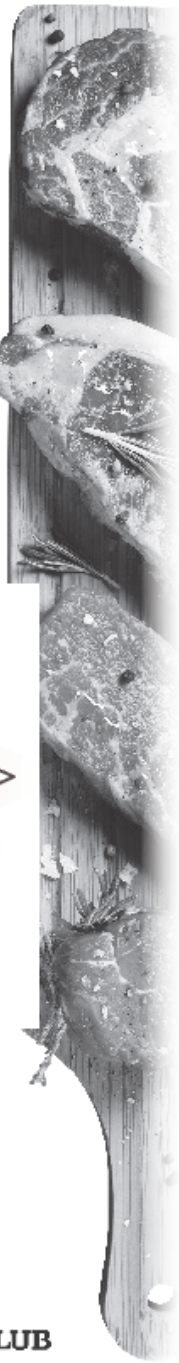


<<Number>>  
**NICOLE WINES LIVESTOCK, LLC**



**PRESENTS**  
**30**  
**DAYS OF**  
**BEEF**

**\$4,000 in BEEF gift certificates!**  
**20+ Quarters of BEEF, (2) Prime Ribs**  
**Plus pounds and pounds of BURGER!**



**\$100 CLUB**  
**HUBBARD**  
*an Alltech company*

Buy \$100 in tickets and be eligible  
 for an extra \$1,000/prizes!

**\$25**  
 per ticket  
**TO BENEFIT THE**



**BOYS & GIRLS CLUB**  
 OF LEWISTOWN

**2X**  
 Drawing each day in  
**April 2020**



- |  |   |
|--|---|
| <p><b>Midday Winners</b><br/>                 (announced same day on KXLO<br/>                 Live at 10:50am) Mon-Thurs.</p> <ol style="list-style-type: none"> <li>1) <i>Lazy J Diamond Ranch-Jim, Alice, Ryan, Megan, Zade: 1/4 Beef; processing donated by Hilger Meats</i></li> <li>2) <i>Anonymous Donor: 1/4 Beef; processing donated by CHS Big Sky &amp; Nicole Wines Livestock</i></li> <li>3) <i>Aratzen Angus Ranch: \$200 Stk Package</i></li> <li>4) <i>Gateway Simmental: 1/4 Beef; processing donated by CHS Big Sky &amp; Nicole Wines Livestock</i></li> <li>5) <i>Lazy J Diamond Ranch-Jim, Alice, Ryan, Megan, Zade: 1/4 Beef; processing donated by Hilger Meats</i></li> <li>6) <i>Larry &amp; Margaret Gatz: Hind/Front Qtrr Bundle; Miller Ranch - Tom &amp; Kim: Stk Bundle</i></li> <li>7) <i>Bas Terra: 1/4 Beef; processing donated by Custom Cuts</i></li> <li>8) <i>Gilpatrick Ranch-John &amp; Steve: 2 Front or Hind Quarter Bundles</i></li> <li>9) <i>Albertsons: \$200 GC</i></li> <li>10) <i>Wickens Salt Creek Ranch-Eric &amp; Emma: 50# hmbgr</i></li> <li>11) <i>Koch Ranch-Raymond &amp; Christine: 50# hmbgr</i></li> <li>12) <i>Lewistown Livestock Auctions: \$200 GC</i></li> <li>13) <i>Duffy Ranch-Russ &amp; Delilah: 50# hmbgr</i></li> <li>14) <i>N Bar Ranch: 50# hmbgr</i></li> <li>15) <i>N Bar Ranch: 50# hmbgr</i></li> <li>16) <i>Descheemaeker Ranch - Paul &amp; Mary: 1/4 Beef; processing donated by CHS Big Sky &amp; Nicole Wines Livestock</i></li> <li>17) <i>Burleigh Angus Ranch-40# hmbgr ; Dan &amp; Laura Boyce 10# hmbgr</i></li> <li>18) <i>Shammel Ranch-Alan &amp; Stephanie, Lyle &amp; Mariah: 1/4 Beef; processing donated by Judith Mtn Meats</i></li> <li>19) <i>Bas Terra: 1/4 Beef; processing donated by Custom Cuts</i></li> <li>20) <i>Seilstad Ranch-Scott &amp; Denise: Fmt/Hind Qtrr Bundle; Westphal Red Angus Inc: Enemy Bundle</i></li> <li>21) <i>Anonymous Donor: Stk Bundle, Ray &amp; Kathy Linhart: Enemy Bundle, Dave &amp; Pam Linker: Enemy Bundle</i></li> <li>22) <i>Stahl's Meat Processing: 50# hmbgr</i></li> <li>23) <i>Heggen Ranch - Ron &amp; Lance: 2 Enemy Bundles, Duffy Ranch - Russ &amp; Delilah: Prime rib</i></li> <li>24) <i>Central MT Cattlewoman's Association: \$200 GC</i></li> <li>25) <i>Steele Ranch-Bill &amp; Marilyn: \$250 GC</i></li> <li>26) <i>Janni Ranch-Thad &amp; Angie: 50# hmbgr</i></li> <li>27) <i>Dee &amp; Martha Boyce: \$100 GC; Dan &amp; Macie Ahlgren: \$100 GC</i></li> <li>28) <i>Mark, Terry, Zach Lewis: 2 Fmt/Hind Qtrr Bundles</i></li> <li>29) <i>Descheemaeker Ranch-Dennis &amp; Kris: \$250 GC</i></li> <li>30) <i>Mike &amp; Vonnice Fleharty: Enemy Bundle; CHS Big Sky &amp; Nicole Wines Livestock: hind or front qtrr bundle</i></li> </ol> | <p><b>Evening Winners</b><br/>                 (announced next day on Rock95<br/>                 Live @ 7:45am) Mon-Thurs.</p> <ol style="list-style-type: none"> <li>1) <i>Widman Ag Supply: \$50 GC, Schultz Ranch - Nick, Marti &amp; family: 20# hmbgr &amp; 5# bf sausage; CHS Big Sky &amp; Nicole Wines Livestock: \$50 GC</i></li> <li>2) <i>Descheemaeker Ranch-Dennis &amp; Kris: \$250 GC</i></li> <li>3) <i>Roger &amp; Robin Peters: 50# hmbgr</i></li> <li>4) <i>Dvoak Angus Ranch: Fmt/Hind Qtrr bundle plus Enemy bundle</i></li> <li>5) <i>Gary &amp; Kathy Jenni: 50# hmbgr</i></li> <li>6) <i>Anonymous Donor: 2 stk bundles</i></li> <li>7) <i>Comes Ranch - Kevin &amp; Annette: Fmt or Hind Qtrr Bundle; CHS Big Sky &amp; Nicole Wines Livestock: \$50 GC</i></li> <li>8) <i>Draggin Iron Ranch: Stk bundle; Roy &amp; Lisa Koch: Stk bundle</i></li> <li>9) <i>Dirt Road Ranch-Jess &amp; Jill Knerr: Prime Rib; Swanz Ranch: \$100 GC</i></li> <li>10) <i>Shammel Ranch-Alan &amp; Stephanie, Lyle &amp; Mariah: 1/4 Beef; processing donated by Judith Mtn Meats</i></li> <li>11) <i>Torgerson LLC - CASE IH: \$200 GC</i></li> <li>12) <i>Lewis Ranch-John, Edgar &amp; Vic: \$200 GC;</i></li> <li>13) <i>Bas Terra: 1/4 Beef; processing donated by Custom Cuts</i></li> <li>14) <i>Albertsons: \$100 GC; Lee Farms - Chuck, Jeff &amp; Jay: \$35 GC; CHS Big Sky &amp; Nicole Wines Livestock: \$65 GC</i></li> <li>15) <i>Hilger Meats: 50# hmbgr</i></li> <li>16) <i>Goette moeller Ranch-Jim &amp; Carole: Hind or Front Qtrr Bundle &amp; Stk Bundle</i></li> <li>17) <i>Rath's Vet Clinic: \$250 Beef Package</i></li> <li>18) <i>Jensen Ranch-Paul &amp; Jennifer: 1/4 Beef; processing by CHS Big Sky &amp; Nicole Wines Livestock</i></li> <li>19) <i>Anonymous Donor: 2 stk bundles</i></li> <li>20) <i>Strouf Ranch - Dave &amp; Cheri: \$100 GC; Jerry &amp; Fran Ayers: \$100 GC</i></li> <li>21) <i>N Bar Ranch: 50# hmbgr</i></li> <li>22) <i>Albertsons: \$200 GC</i></li> <li>23) <i>Wickens Salt Creek Ranch-Eric &amp; Emma: 50# hmbgr</i></li> <li>24) <i>Gateway Simmental: 1/4 Beef; processing donated by CHS Big Sky &amp; Nicole Wines Livestock</i></li> <li>25) <i>N Bar Ranch: 50# hmbgr</i></li> <li>26) <i>CHS Big Sky &amp; Nicole Wines Livestock: \$200 GC</i></li> <li>27) <i>Bas Terra: 1/4 Beef; processing donated by Custom Cuts</i></li> <li>28) <i>Lazy J Diamond Ranch-Jim, Alice, Ryan, Megan, Zade: 1/4 Beef; processing donated by Hilger Meats</i></li> <li>29) <i>Anonymous Donor: 1/4 Beef; processing donated by CHS Big Sky &amp; Nicole Wines Livestock</i></li> <li>30) <i>Lazy J Diamond Ranch-Jim, Alice, Ryan, Megan, Zade: 1/4 Beef; processing donated by Hilger Meats</i></li> </ol> |
|--|---|

*Fmt/Hind Qtr Bundle= \$150 of assorted T Bones, Sirloin, Rump Roasts, Round Stk, Burger*  
*Stk Bundle=\$100 of assorted Sirloin Stk, T Bones and Burger*  
*Enemy Bundle=\$50 of assorted Burger, Rump Roast and Sirloin*

**Drawing based on NY lottery Midday & Evening Numbers**

Name \_\_\_\_\_

Address \_\_\_\_\_

Phone \_\_\_\_\_

\$100 Club     **2020 Beef Raffle**     <<Number>>

Sold By \_\_\_\_\_

**EAT BEEF!**



Support your Neighbor!